

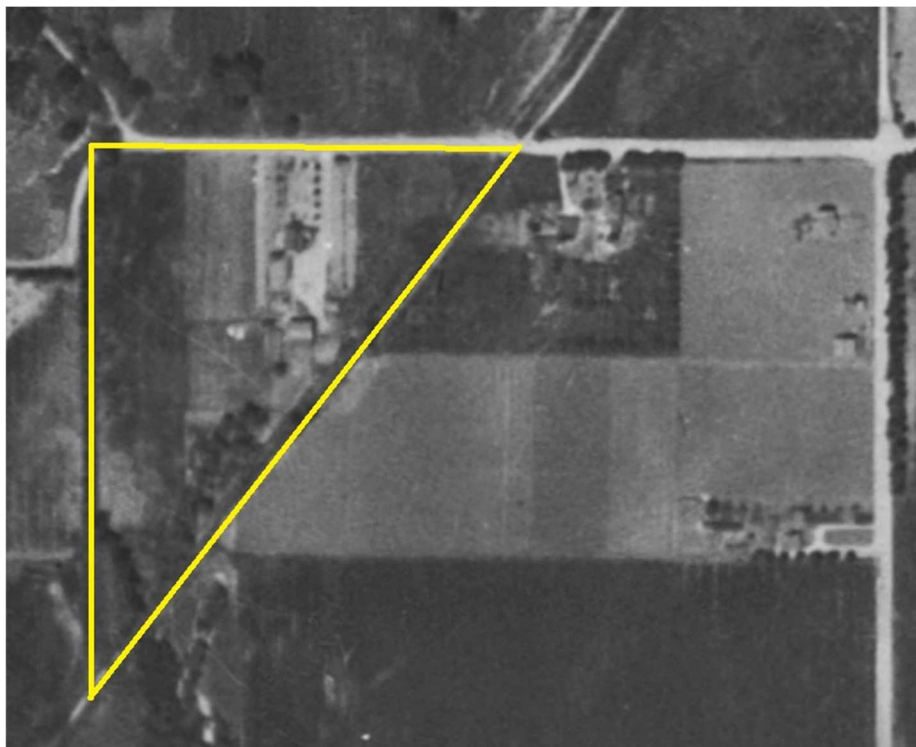
Shadwick (and Rockpointe) History

Nelson Gray moved to Chatsworth in 1893 (1962 “Pigtails to Silver-Grey”), and was a successful investor in real estate. Nelson owned an 80-acre tract north of Lassen to Devonshire, west of Topanga to Farralbone. In 1908, Chester Shadwick (26) married Sarah “Sadie” Gray (22) in Pasadena. Sadie was the first-born child of Nelson Gray and Minerva “Minnie” Collins Gray. More about Nelson Gray and Family in our [Nov 2017 newsletter](#) pgs. 6-8.

In 1911, Chester and Sadie moved “next door” to the Grays on a seven acre parcel that was once a part of the Ackerman homestead.

The Google Earth picture to the right outlines the Gray 80-acre tract in blue, and the Shadwick 7-acre tract in yellow.

The 1928 aerial below outlines the Shadwick ranch in yellow. The top line is Devonshire, the diagonal line was Andora (today’s Valley Circle). At that time, the Santa Susana Creek was a dirt ditch that seasonally flowed down Andora.



Some memories of the Shadwick ranch are shared below.

An excerpt from the 1962 Gray autobiography - “Pigtails to Silver-Grey” - “*That fall (1911) after we returned home, Sadie and Chester (Shadwick) moved to a little house up across from the creek at the foot of the hills to the west (where we heard the doves cooing years before) among large, shady trees.*”

The Shadwick home on seven acres was at 22322 Devonshire (today’s Rockpointe clubhouse). They had seven children, and lived there for more than 20 years (until the early 1930’s).

Photos below from Gray descendant Polly Pastre, thanks for sharing...

A memory from our 2013-04 Smoke Signal article by Lila Schepler – *“Having roastin’ ears and hotdogs was a fun thing for young people down on the old Shadwick ranch (the Home was located about where the Rockpointe Recreation Lounge is today). Roastin’ sticks were out from the willows along the wash (now a concrete flood channel), a few ears of corn picked from their garden, wieners and buns you brought with you and a lovely dinner was made around an open fire. Shadwicks had an old wood range in their kitchen that was a marvel to me; the Shadwick girls could tell the temperature by reaching their hand in the oven and could decide if it needed another stick of wood or if it was ready to bake. Ah, the light and fluffy biscuits I ate there!*



The Shadwicks moved to Bloomington, Riverside by 1935.

Additional property history of 22322 Devonshire:

Sept. 11, 1937 -- the Chatsworth Riding Club and Kennels are announced – Van Nuys News. Saddle Horses and registered Airedales. Unescorted ride \$1.00, escorted \$2.00. Two months later they advertised Greyhounds and Airedales from their kennels. And that was all....

1938-1940 - Alfred Wren (1896-1957) and Mildred Hanawalt Wren (1906-1993) with their sons Richard (1929-2009), Darryl (1930-) and John (1932-1976) were residents per Voter Registration records. In 1942 Alfred had moved to 11051 Mason, employed by the B.F. Porter Estate.

The Shadwick house is gone in a 1944 aerial.